



RECP #: 752858
 RECORDED 5/8/2019 AT 1:21 PM BK# 2620 PG# 1900
 Debra K. Lee, CLERK OF LARAMIE COUNTY, WY PAGE 1 OF 1

STATE OF WYOMING CORNER RECORD

(In compliance with the CORNER PERPETUATION AND FILING ACT, Wyoming Statutes, 1997 Section 33-29-140, et. seq., and the Rules and Regulations of the Board of Registrations for Professional Engineers and Professional Land Surveyors)

SOUTHEAST CORNER SECTION 34, T. 18 N., R. 63 W., 6TH P.M., LARAMIE COUNTY, WYOMING

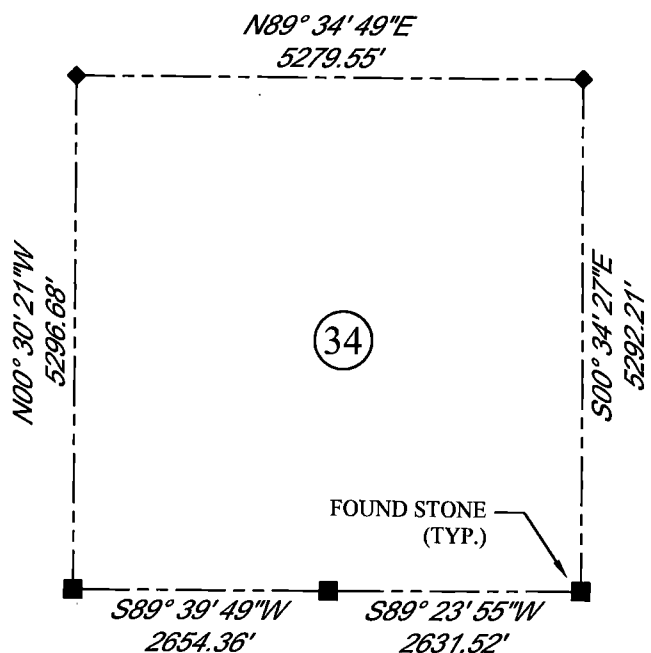
GLO: SET A SANDSTONE 18X10X4, 12 IN. DEEP WITH 4 MARKS ON THE WEST AND 2 ON THE EAST FACE FOR CORNER TO SECTIONS 2, 3, 34, AND 35.

FOUND: SANDSTONE, ON SIDE, NOT SET. STONE IS APROX. 19X14X5, WITH 4 NOTCHES CLEARLY VISIBLE ON 1 FACE, AND 2 APPARENT NOTCHES ON ANOTHER FACE.



SCALE: 1" = 2000'
 NORTH DETERMINED BY
 G.P.S OBSERVATIONS

SET: 3.25" ALUMINUM CAP ON # 5
 REBAR, AT SURFACE, ON SOUTH
 SIDE OF FOUND STONE, STAMPED
 AS SHOWN



LEGEND:

- FOUND BLM CAP
- FOUND USFS CAP
- FOUND STONE
- FOUND PRIVATE MONUMENT
- ◆ CALCULATED POSITION
- ▲ SET MONUMENT (LS10245)
- SECTION LINE

DATE OF FIELD WORK: 10/04/2018 OFFICE REFERENCE: MERIDEN

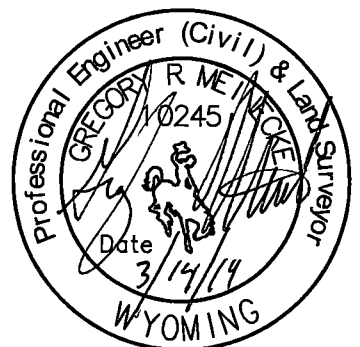
CROSS INDEX DIAGRAM

	1	2	3	4	5	6	7	8	9	10	11	12	13	14	15	16	17	18	19	20	21	22	23	24	25	
A																										
B																										
C		6																								
D																										
E																										
F																										
G																										
H																										
J																										
K																										
L																										
M																										
N																										
O																										
P																										
Q																										
R																										
S																										
T																										
U																										
V																										
W																										
X																										
Y																										
Z																										

WOOD
 2615 AVIATION DRIVE
 SHERIDAN, WY 82801
 PH: 307-675-6400



THIS CORNER RECORD WAS
 PREPARED BY ME OR UNDER
 MY DIRECTION AND
 SUPERVISION,
 SEAL AND SIGNATURE



CORNER NAME: SOUTHEAST SECTION: 34 T. 18 N., R. 63 W. ; 6TH P.M. CROSS-INDEX # Z-17
 SBRPELS/PLSW: MARCH 1994; PLSW JANUARY 1998